

# 1

## Introduction

### 1.1 Scope

This plan has been written by Historic Environment Associates (HEA) working closely with Dover District Council (DDC) and a group of supporting consultants, commissioned by the council, to provide specialist input into this Conservation Management Plan (CMP) and the development of Round 2 Application to the Heritage Lottery Fund.

- Kent Gardens Trust – historical research into both Kearsney Abbey and Russell Gardens
- Macemark Access Consultants – access survey of all the paths and entrances
- The Morton Partnership – survey of all the structures within the park with particular attention to those listed by Historic England
- Bramley Associates – Phase 1 habitat survey of both parks and recommendations for ecological enhancement of the sites
- Canterbury Archaeological Trust – undertaking a review of all aspects of archaeology of the parks including the mills and their history and importance to the area
- JBA Consulting – hydrological survey and condition of hydrological features
- Islington Tree Services - survey of all the parkland trees
- Land and Land Management – survey of the woodlands
- Dannatt Johnson Architects – designing the café extension, car parking and eye-catcher replacement
- DHA Transport – location and treatment of road crossing improvements between the parks and for general improvements to traffic calming and pedestrian crossing

The Plan will form part of the development work leading to a round 2 Heritage Lottery Fund (HLF) application to implement the recommendations.

### 1.2 Brief

The brief circulated by DDC stated: *‘The Conservation Plan is an essential component of the development phase. It is the key document for helping us to understand the significance of the heritage of the Kearsney Parks, why it is valued, by whom and how we need to maintain it in the long term for the benefit of local people.’*

The brief also requested that: *‘The general approach, format and layout of the Conservation Plan should be informed principally by HLF’s Parks for People Conservation Plan Guidance, 2012.’*

DDC requires that *‘the final Conservation Plan is a useful tool that will help to shape our decision-making and future work, rather than a very lengthy and potentially inaccessible document. It is very important that the final Conservation Plan is accessible to the public so the language used must be clear, concise and where possible jargon-free.’*

It states that the plan *‘should also consider JS Kerr’s Conservation Plan: A Guide to the Preparation of Conservation Plans for Places of European Cultural Significance (2004, The National Trust of Australia (NSW)).’*

### 1.3 Methodology

Preparation of this report has followed a structured process of discussions, research and analysis. The project started March 5<sup>th</sup> 2015 with a meeting on site at Kearsney Abbey with the project officer and community officer to discuss programme and background information for the study. Following this HEA:

- Met with a range of DDC officers to discuss their views and thoughts around the heritage, ecology and management of the parks;
- Met with representatives of the Round 2 delivery team;
- Met with Kent Gardens Trust (KGT)

- Spent a day at Kearsney Parks assisting DDC officers, to engage with users of the park and explore opinions on the parks as they are today, what people do when visiting the parks and what changes they would like to see in the future;
- Undertook archival research to identify references, maps and photographs that may not have been sourced by KGT in their reports on the parks;
- Met with members of the design team developing the Round 2 application;
- Attended a meeting with the HLF and design team to present background of the historical development of the parks and explain the restoration approach that underlies the project.

### 1.4 Acknowledgements

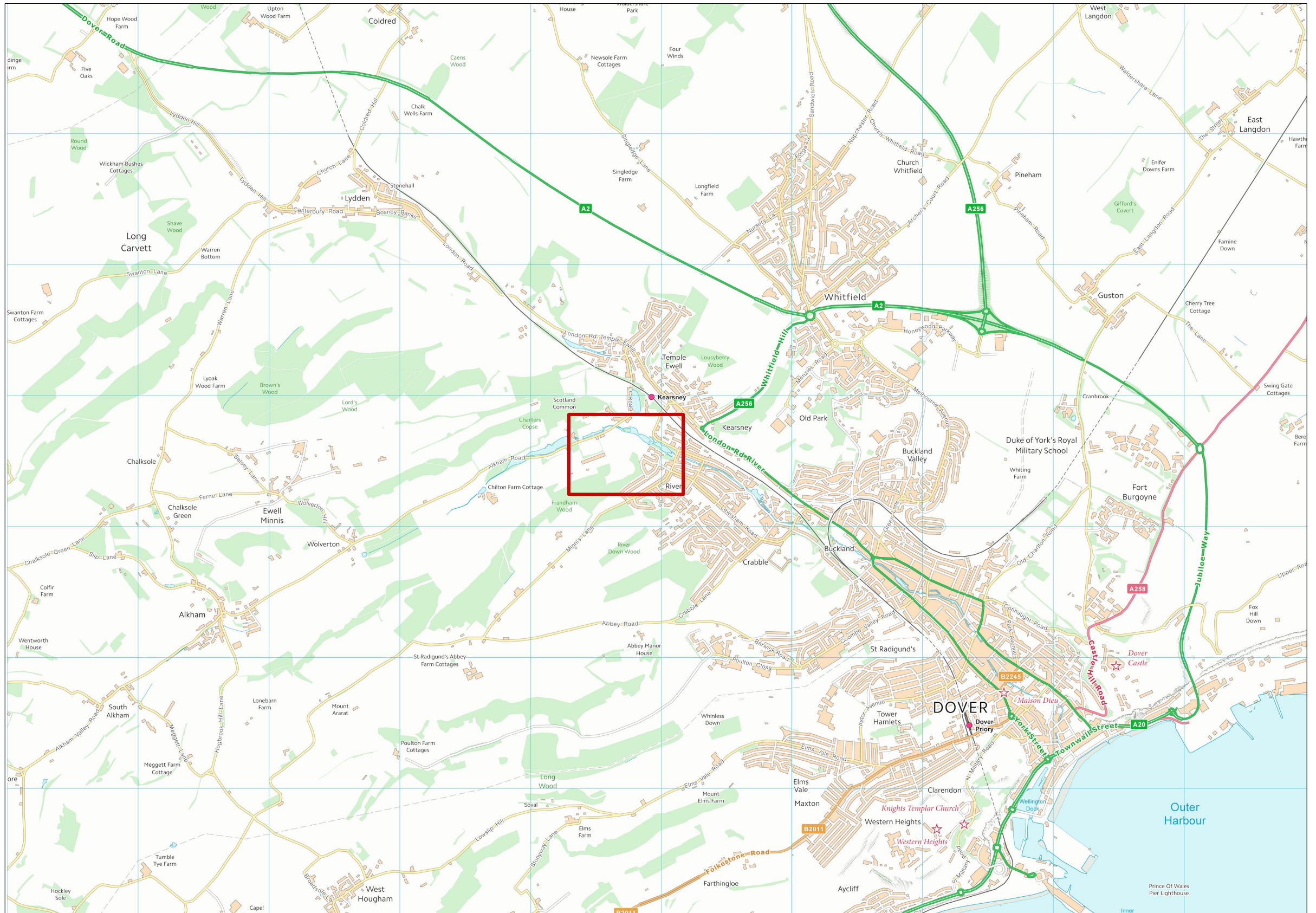
The team would like to acknowledge the support of DDC officers in the production of this report, in particular Jon Winder, Kearsney Parks Project Manager for his excellent co-ordination of, and support for, the diverse consultant team.

Much of the survey information has been taken from a range of technical studies commissioned for the Round 2 HLF application and they are acknowledged where this data has been used.

We would also like to thank Mr and Mrs Harding for access to their collection of old photographs of Kearsney Court and to Dover Museum, and Kent County Archive for access to plans and photographs, and to Chris Mawson for the cover photograph. See Bibliography for more specific figure and plate acknowledgements.

### 1.5 Copyright of illustrations

Please note that these images should not be reproduced for any other purpose without specific permission. Modern site photographs are by HEA unless noted otherwise.



**Figure 1.1**  
**Location Plan**